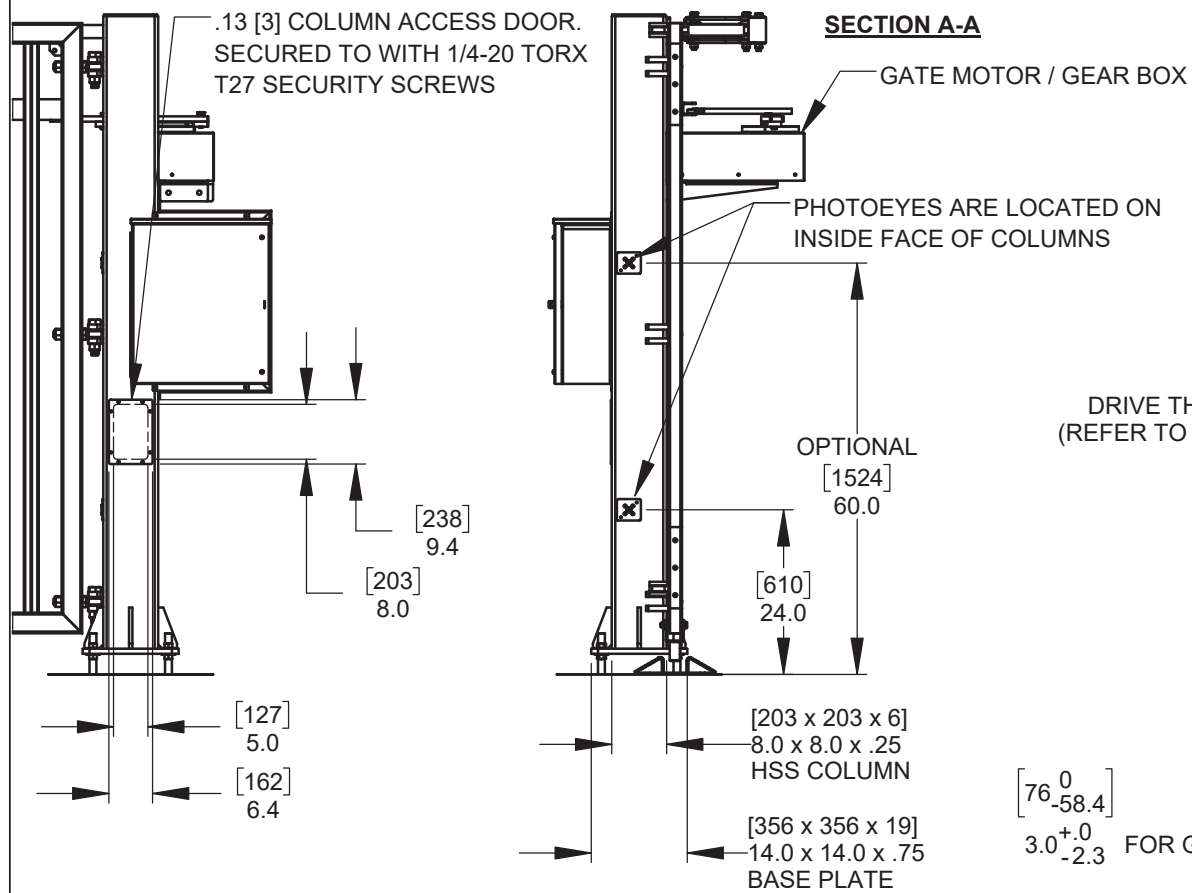


DETAIL A - VERTICAL PANEL CATCH

.13 [3] STEEL CATCH — NYLON CATCH BLOCK

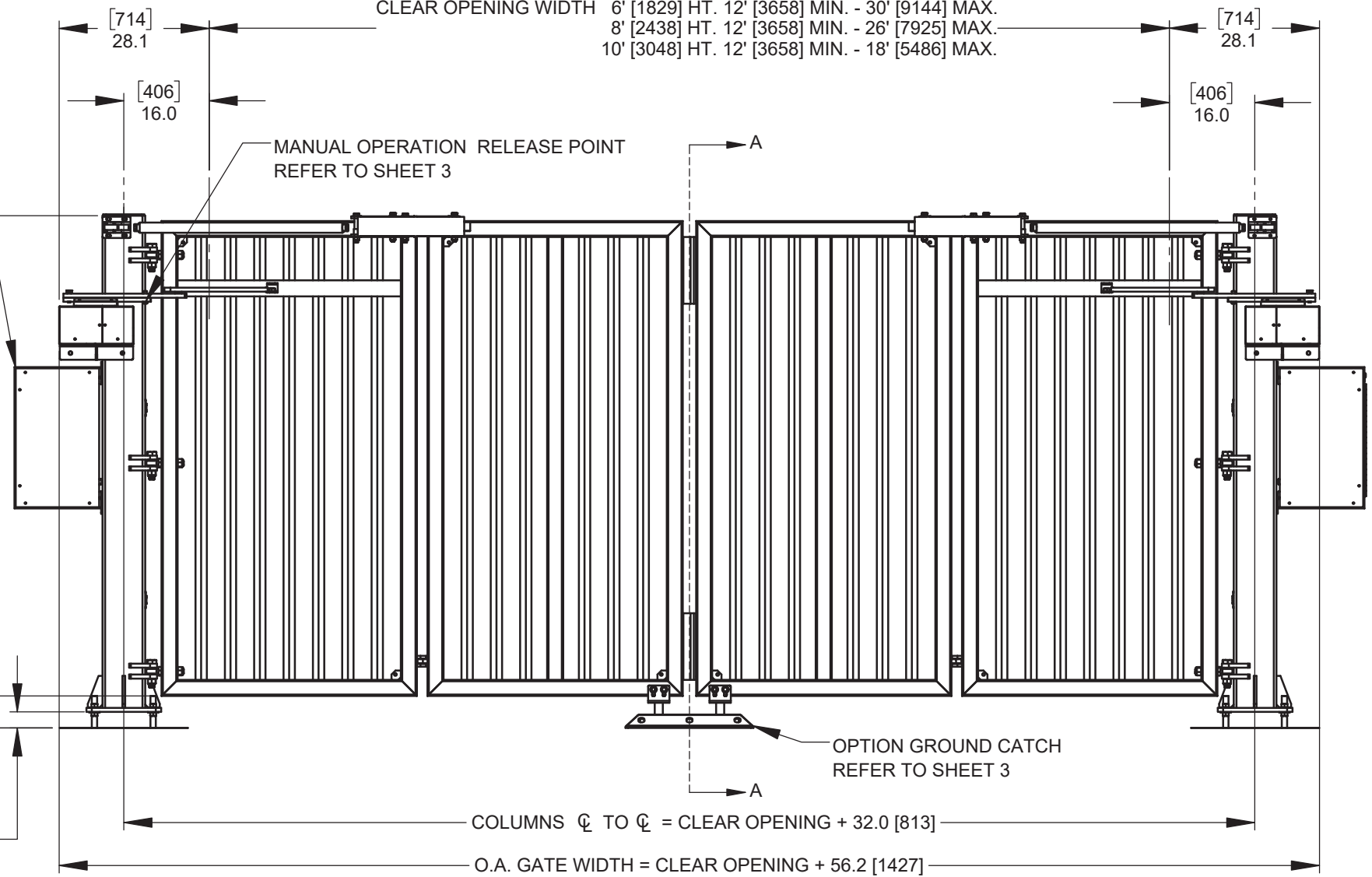
ELECTRICAL CONTROLLERS ARE MOUNTED IN A 24" [610] x 20" [508] x 8 [203] NEMA 3R ENCLOSURE. (1 PER GATE OPERATOR)
POWER REQUIREMENTS: 115VAC / 230 VAC, SINGLE PHASE, 20A
 ENCLOSURES MUST BE MOUNTED WITHIN 10' [3048] OF GATE MOTOR / GEAR BOX.
 ENCLOSURES ARE SHOWN IN RECOMMENDED COLUMN MOUNTING LOCATION USING SUPPLIED MOUNTING BRACKETS.

CLEAR OPENING WIDTH 6' [1829] HT. 12' [3658] MIN. - 30' [9144] MAX.
 8' [2438] HT. 12' [3658] MIN. - 26' [7925] MAX.
 10' [3048] HT. 12' [3658] MIN. - 18' [5486] MAX.



DRIVE THRU HEIGHTS (REFER TO CHART BELOW)

[76⁰_{-58.4}] 6.0 FOR GATE LEVELING



NOTES:

DIMENSIONS ARE IN INCHES, DIMENSIONS SHOWN IN [] ARE IN MILLIMETERS.

FINISH NOTES:

STANDARD FINISH: HOT DIPPED GALVANIZED ON ALL STEEL COMPONENTS

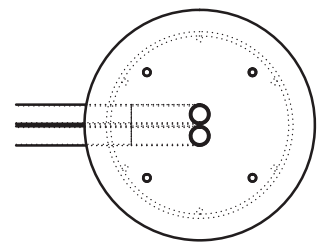
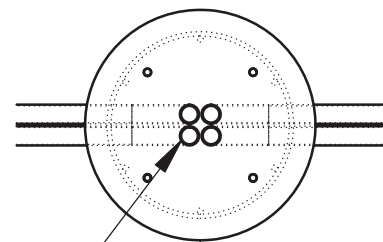
OPTIONAL FINISH: POWDER COAT PAINT, CUSTOM COLORS AVAILABLE
 RAL # MUST BE SPECIFIED AT TIME OF ORDER

DRIVE THRU HEIGHTS	
6ft	72" [1829]
8ft	96" [2438]
10ft	120" [3048]



6828 W Melrose St.
 Boise, ID 83709
 Phone: 1-800-275-5998
 Email: info@sloansg.com
 Web: www.sloansg.com

Description:		
BG-2310 TRACKLESS BI-FOLDING GATE SYSTEM STANDARD DIMENSIONS		
Customer / Project Name:		
Finish:	Date:	
	4/13/2020	
Drawing No.	Rev.	Sheet:
		1 of 5



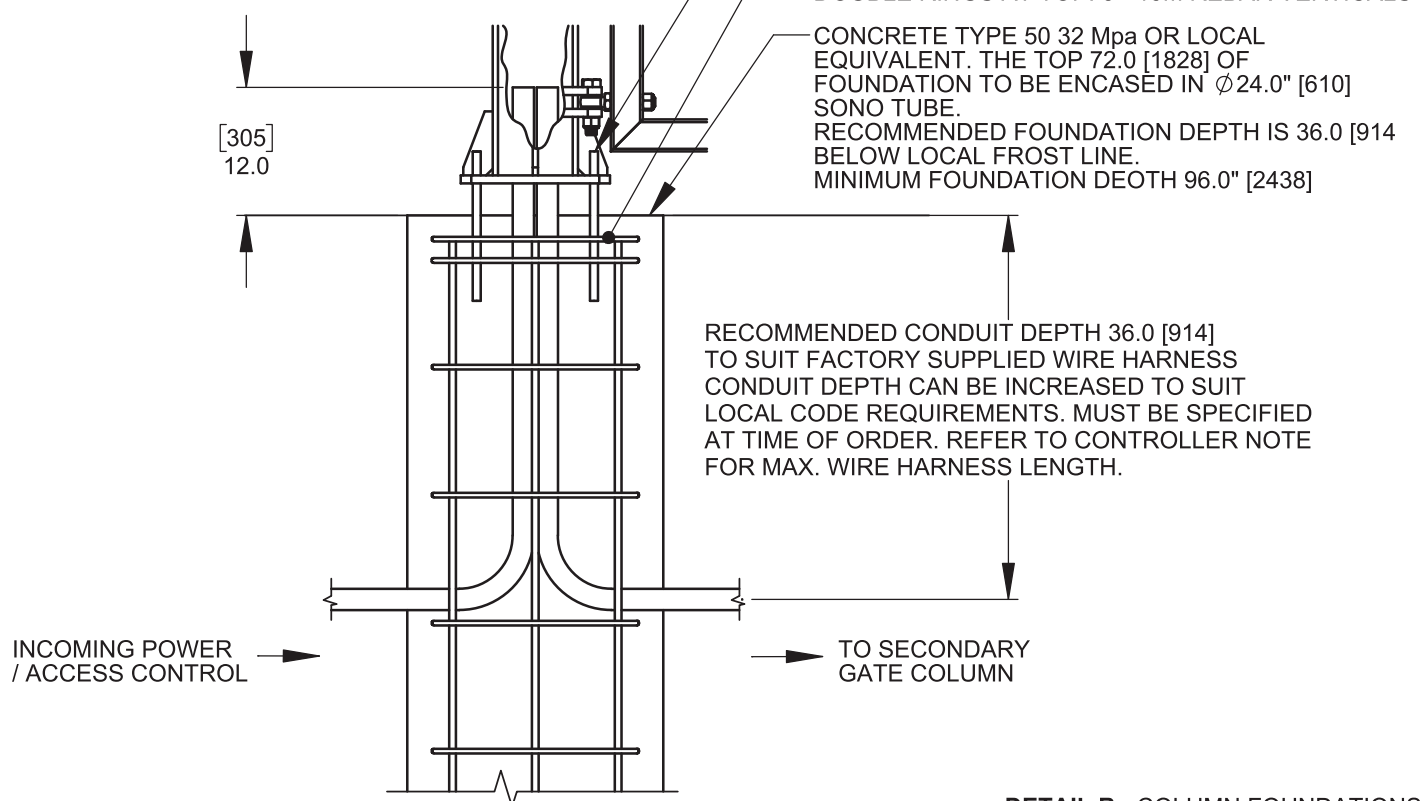
NOTE:
PRIMARY COLUMN IS THE COLUMN WITH INCOMING POWER AND ACCESS CONTROL CONDUIT.

4 PCES. 1" [25] CONDUIT - BY OTHERS
2 IN PRIMARY COLUMN, FROM INCOMING POWER SUPPLY / ACCESS CONTROL.
2 IN SECONDARY COLUMN FROM PRIMARY COLUMN.

.75" [19] HILTI HAS 5.8 x 17" [432] ANCHOR BOLTS
ADHESIVE: HILTI HVU OR APPROVED EQUIVALENT

REINFORCING STEEL:
10M ϕ 19 [493] REBAR RINGS SPACED @ 12 [305] O/C
DOUBLE RINGS AT TOP. 8 - 15M REBAR VERTICALS

CONCRETE TYPE 50 32 Mpa OR LOCAL EQUIVALENT. THE TOP 72.0 [1828] OF FOUNDATION TO BE ENCASED IN ϕ 24.0" [610] SONO TUBE.
RECOMMENDED FOUNDATION DEPTH IS 36.0 [914] BELOW LOCAL FROST LINE.
MINIMUM FOUNDATION DEPTH 96.0" [2438]



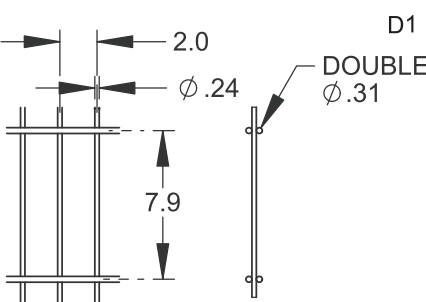
INCOMING POWER / ACCESS CONTROL

TO SECONDARY GATE COLUMN

RECOMMENDED CONDUIT DEPTH 36.0 [914] TO SUIT FACTORY SUPPLIED WIRE HARNESS
CONDUIT DEPTH CAN BE INCREASED TO SUIT LOCAL CODE REQUIREMENTS. MUST BE SPECIFIED AT TIME OF ORDER. REFER TO CONTROLLER NOTE FOR MAX. WIRE HARNESS LENGTH.

DETAIL B - COLUMN FOUNDATIONS

DETAIL D1



DOUBLE ϕ .31

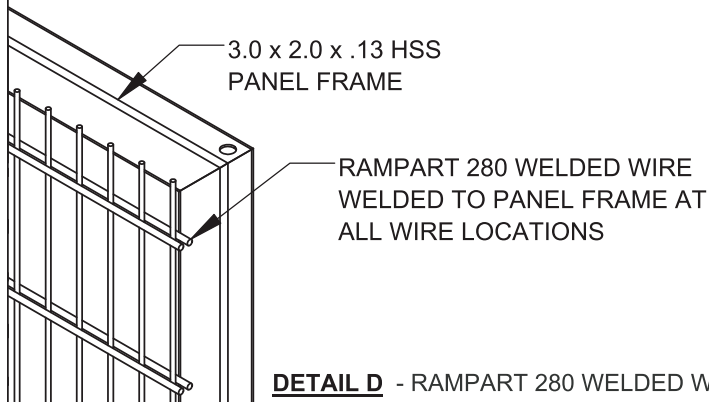
2.0

ϕ .24

7.9

GATES LARGER THAN 20' [6M] WILL HAVE ADDITIONAL VERTICAL 2.0 [51] x 3.0 [76] x .13 [3] HSS WELDED @ ϕ OF PANEL

DETAIL D2



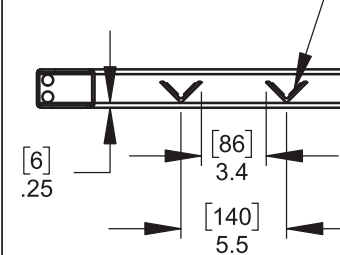
3.0 x 2.0 x .13 HSS PANEL FRAME

RAMPART 280 WELDED WIRE WELDED TO PANEL FRAME AT ALL WIRE LOCATIONS

DETAIL D - RAMPART 280 WELDED WIRE INFILL

DETAIL E1

PICKETS ARE WELDED TO GATE PANEL ON INNER FACE OF PICKET



[6]

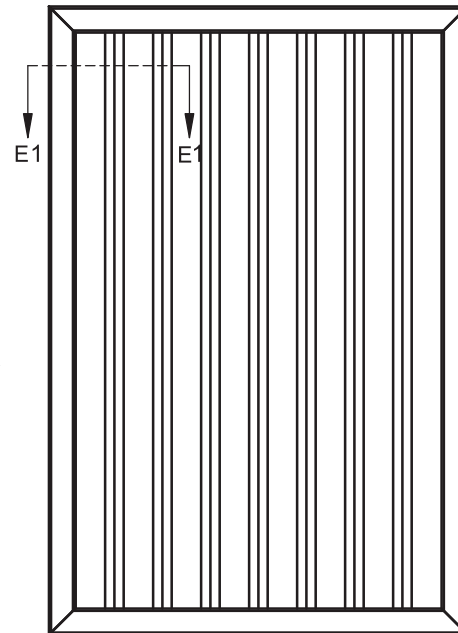
.25

[86]

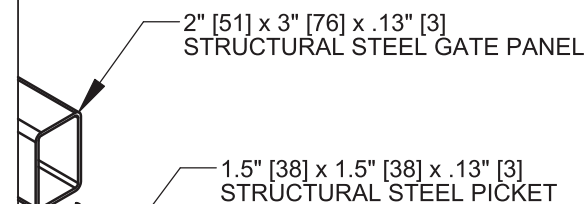
3.4

[140]

5.5



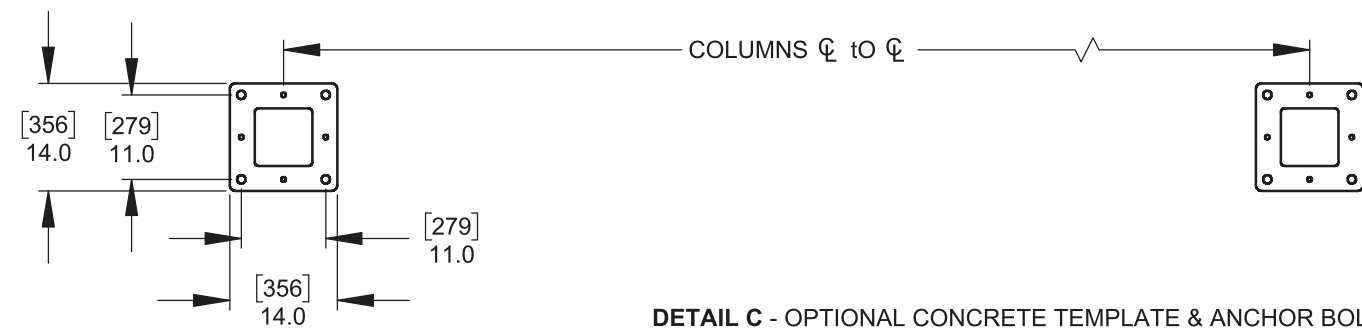
DETAIL E2



2" [51] x 3" [76] x .13" [3] STRUCTURAL STEEL GATE PANEL

1.5" [38] x 1.5" [38] x .13" [3] STRUCTURAL STEEL PICKET

DETAIL E - VERTICAL PICKET INFILL



[356]

14.0

[279]

11.0

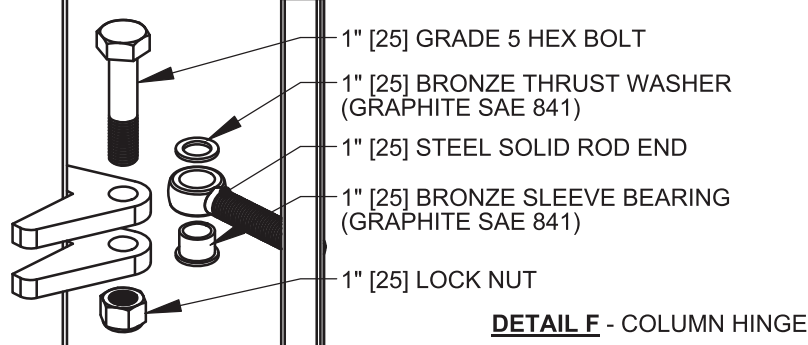
[279]

11.0

[356]

14.0

DETAIL C - OPTIONAL CONCRETE TEMPLATE & ANCHOR BOLT KIT



1" [25] GRADE 5 HEX BOLT

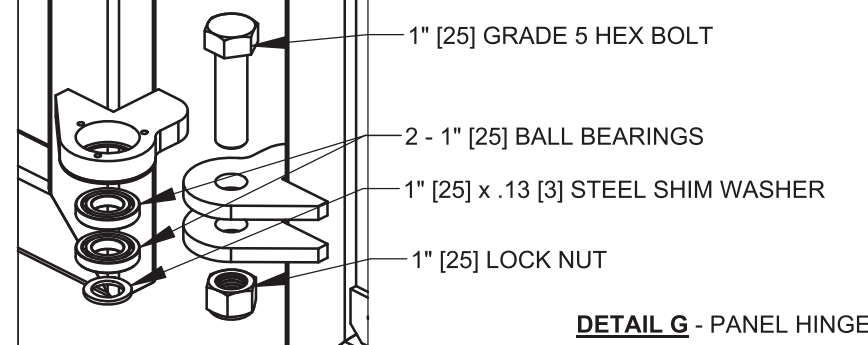
1" [25] BRONZE THRUST WASHER (GRAPHITE SAE 841)

1" [25] STEEL SOLID ROD END

1" [25] BRONZE SLEEVE BEARING (GRAPHITE SAE 841)

1" [25] LOCK NUT

DETAIL F - COLUMN HINGE



1" [25] GRADE 5 HEX BOLT

2 - 1" [25] BALL BEARINGS

1" [25] x .13 [3] STEEL SHIM WASHER

1" [25] LOCK NUT

DETAIL G - PANEL HINGE

INCLUDED WITH BG-2310

- 2 - ELECTRICAL OPERATORS MOUNTED IN 24" [610] x 20" [508] x 8" [203] NEMA 3R ENCLOSURES.
- KEY FOR MANUAL PANEL RELEASE

OPTIONS:

- CONCRETE TEMPLATE & ANCHOR BOLT KIT
- VEHICLE DETECTION LOOP RELAYS
- VEHICLE DETECTION LOOPS, DIRECT BURIAL OR SAW CUT
- SURFACE MOUNTED CENTER CATCH
- 4" [102] RED / GREEN LED TRAFFIC LIGHT
- AMBER STROBE LIGHT
- ALUMINUM SERRATED ANTI - CLIMB
- BARBED WIRE

Description:
BG-2310 TRACKLESS BI-FOLDING GATE SYSTEM STANDARD DIMENSIONS

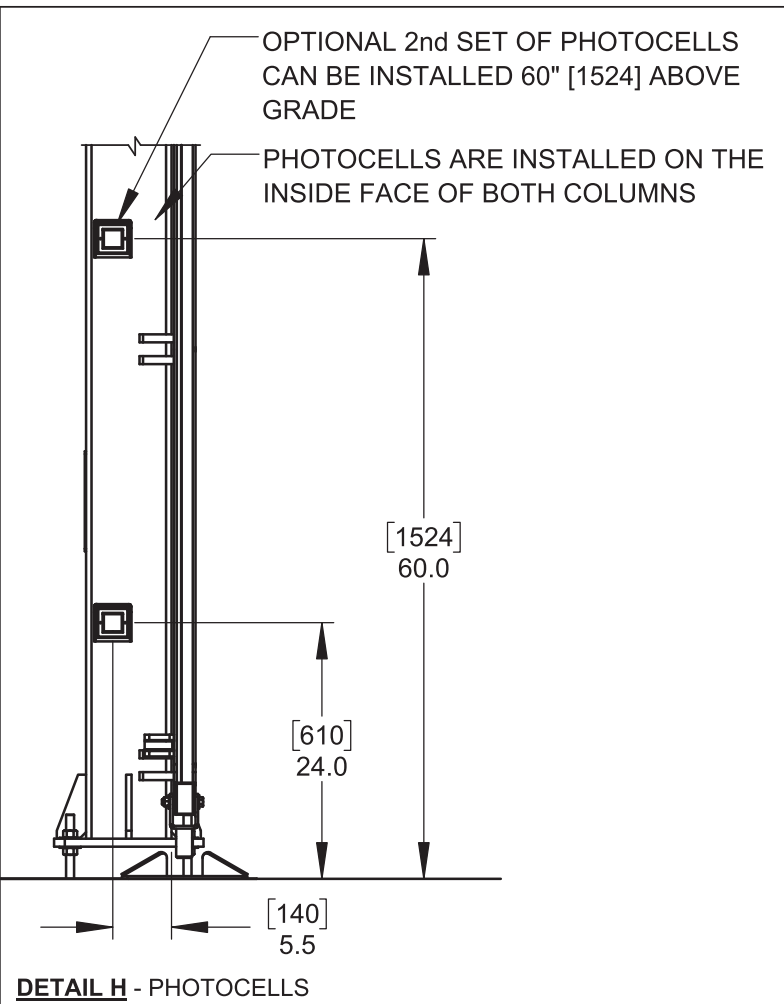
Customer / Project Name:

Finish: _____ Date: 1/30/2019

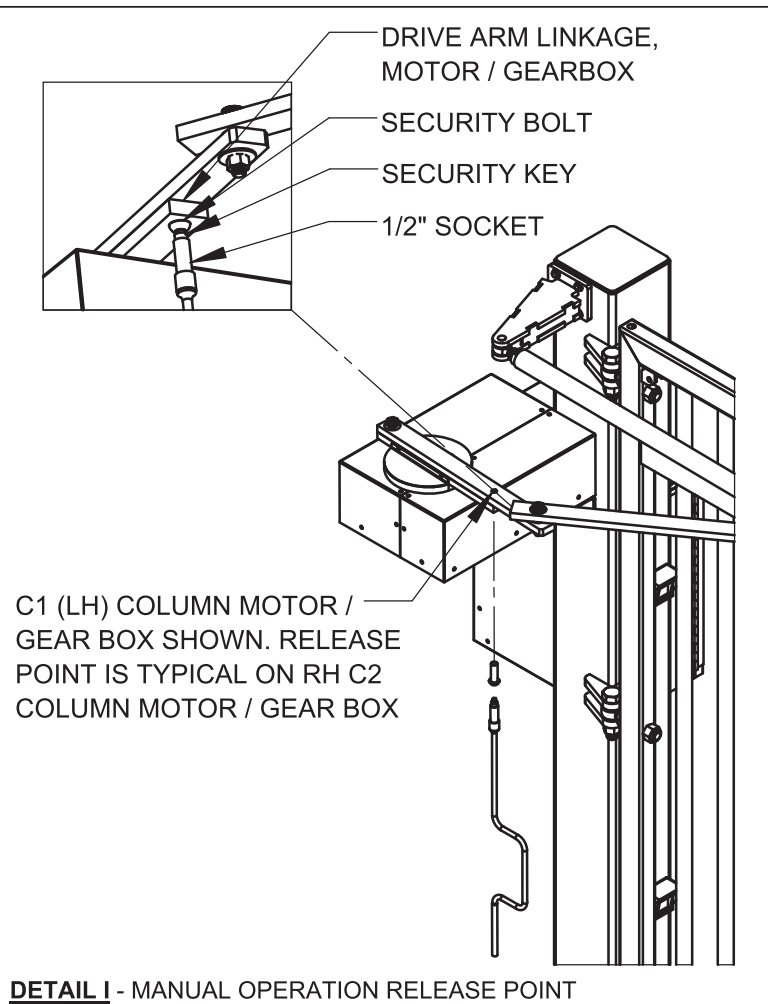
Drawing No. _____ Rev. **A** Sheet: 2 of 6



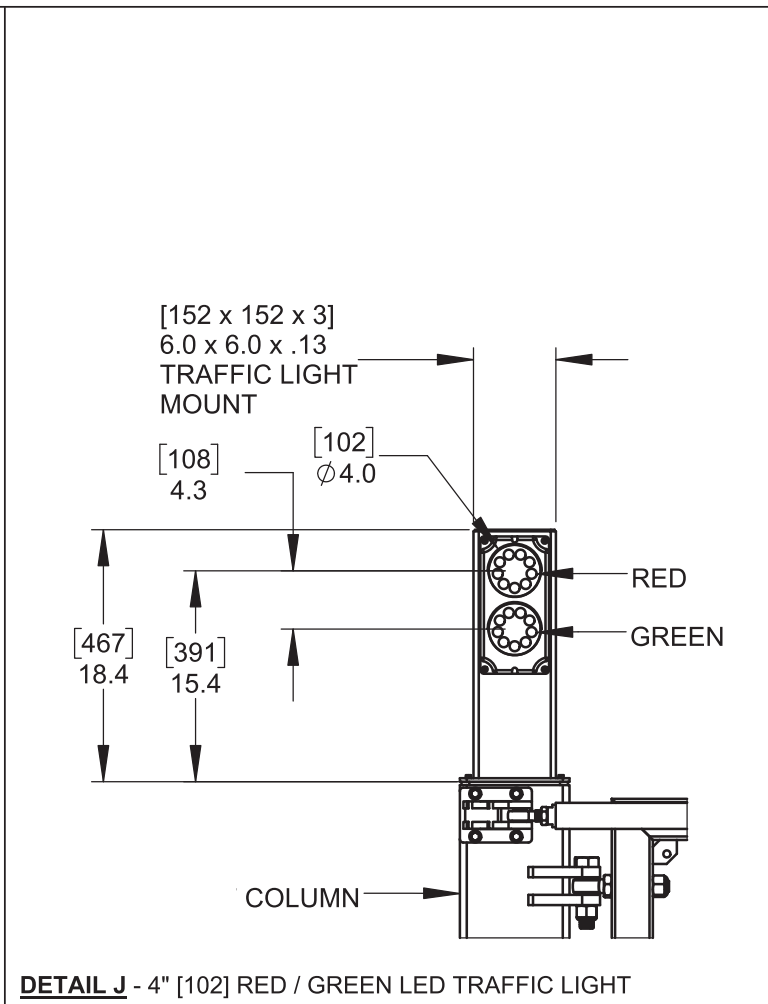
6828 W Melrose St.
Boise, ID 83709
Phone: 1-800-275-5998
Email: info@sloansg.com
Web: www.sloansg.com



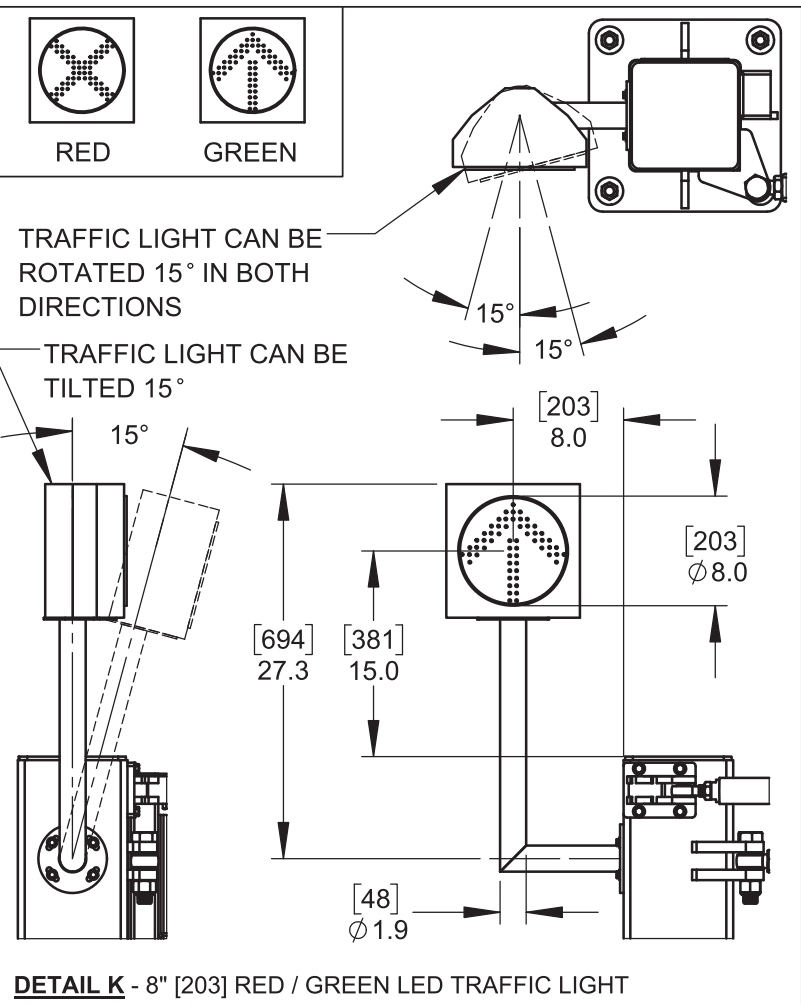
DETAIL H - PHOTOCELLS



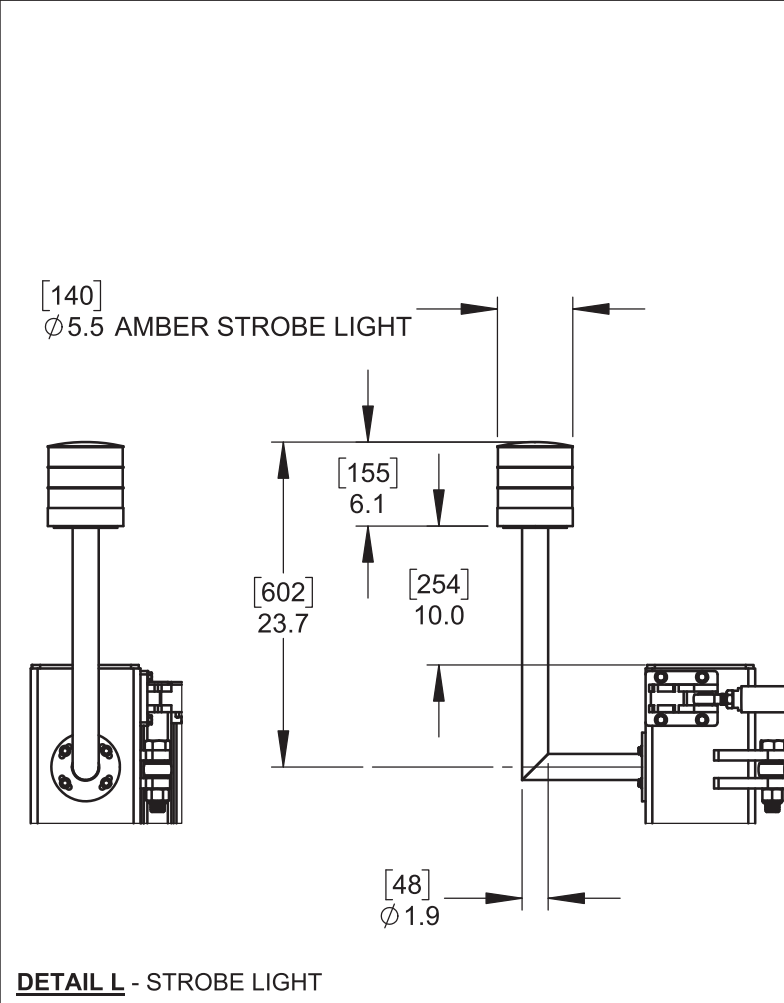
DETAIL I - MANUAL OPERATION RELEASE POINT



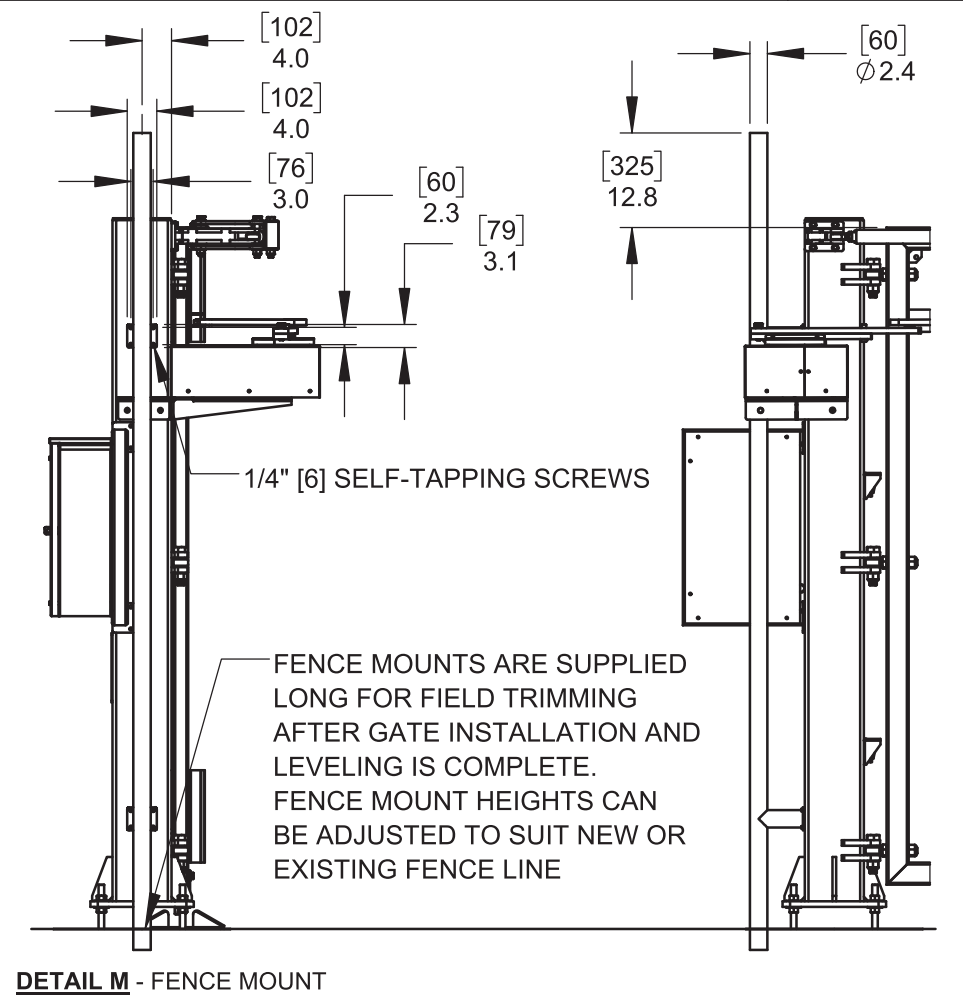
DETAIL J - 4" [102] RED / GREEN LED TRAFFIC LIGHT



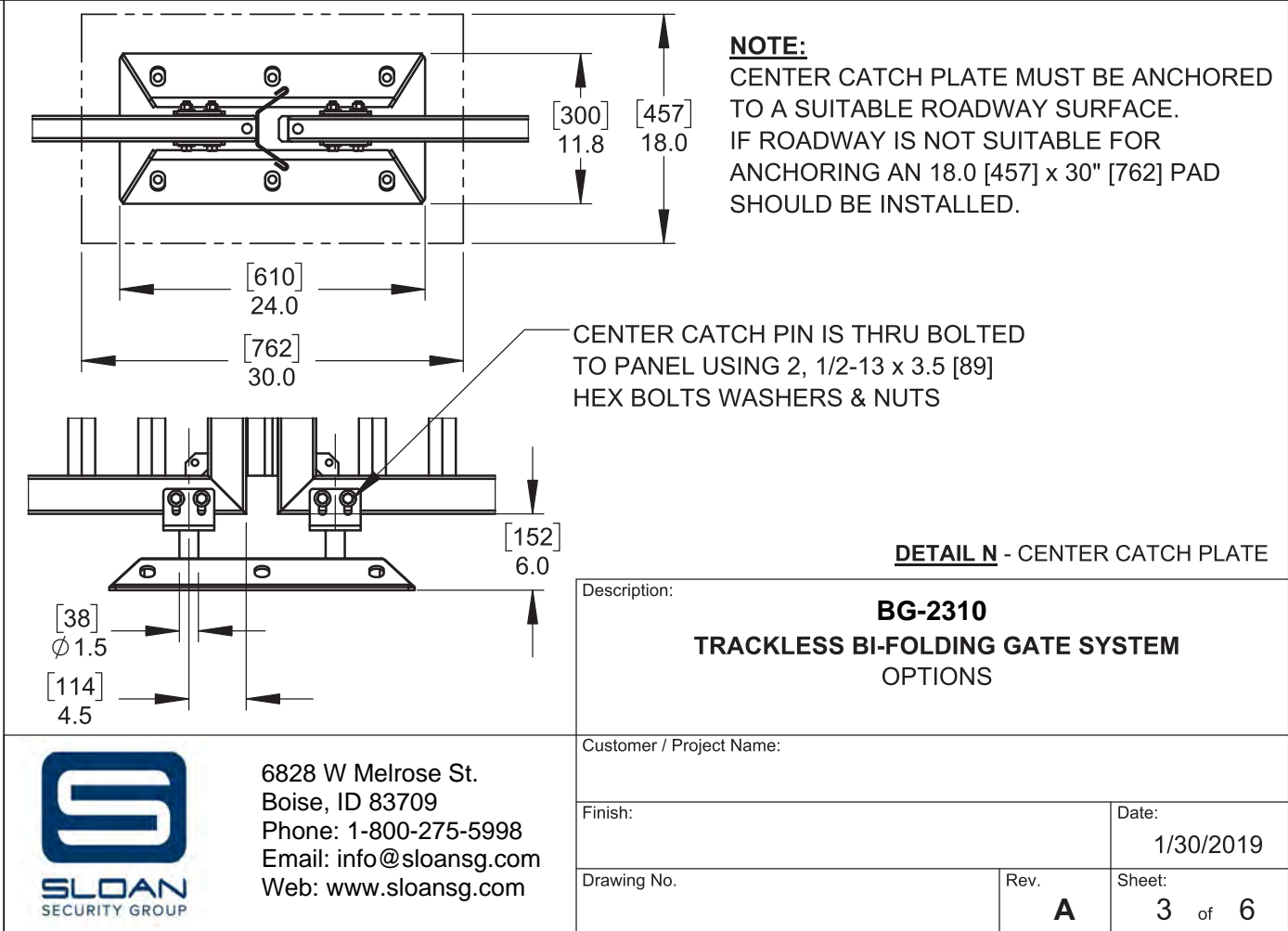
DETAIL K - 8" [203] RED / GREEN LED TRAFFIC LIGHT



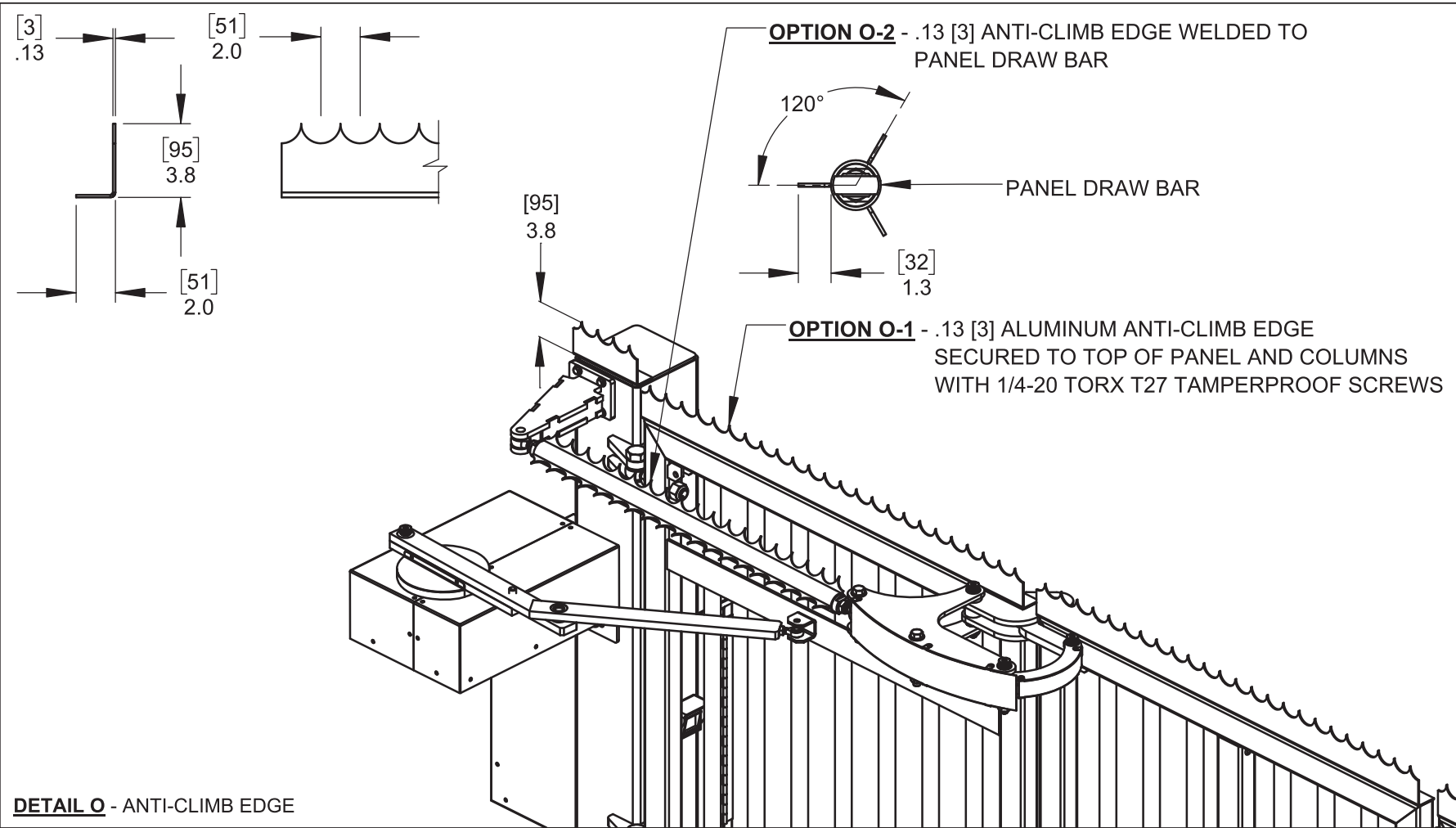
DETAIL L - STROBE LIGHT



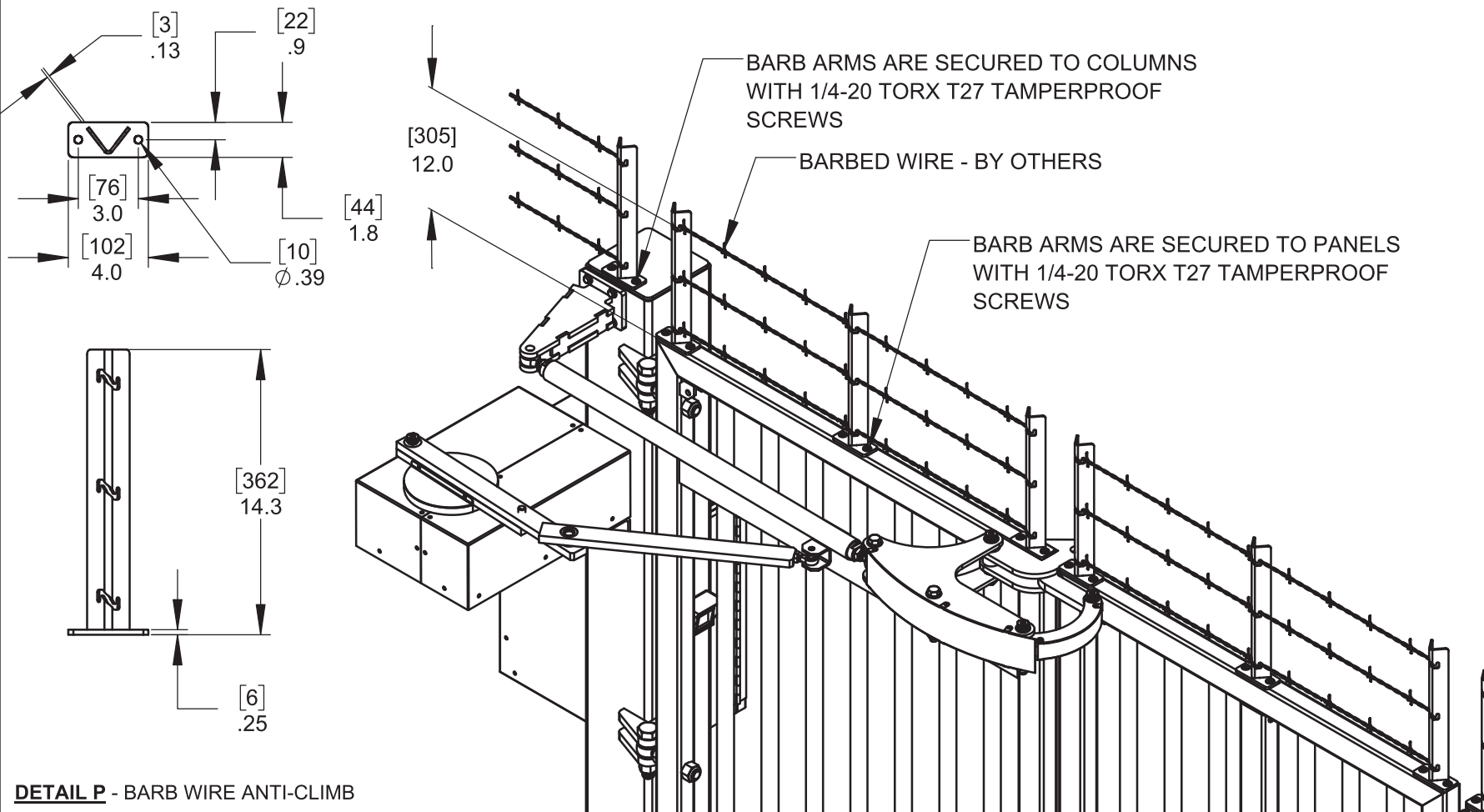
DETAIL M - FENCE MOUNT



6828 W Melrose St.
Boise, ID 83709
Phone: 1-800-275-5998
Email: info@sloansg.com
Web: www.sloansg.com



DETAIL O - ANTI-CLIMB EDGE

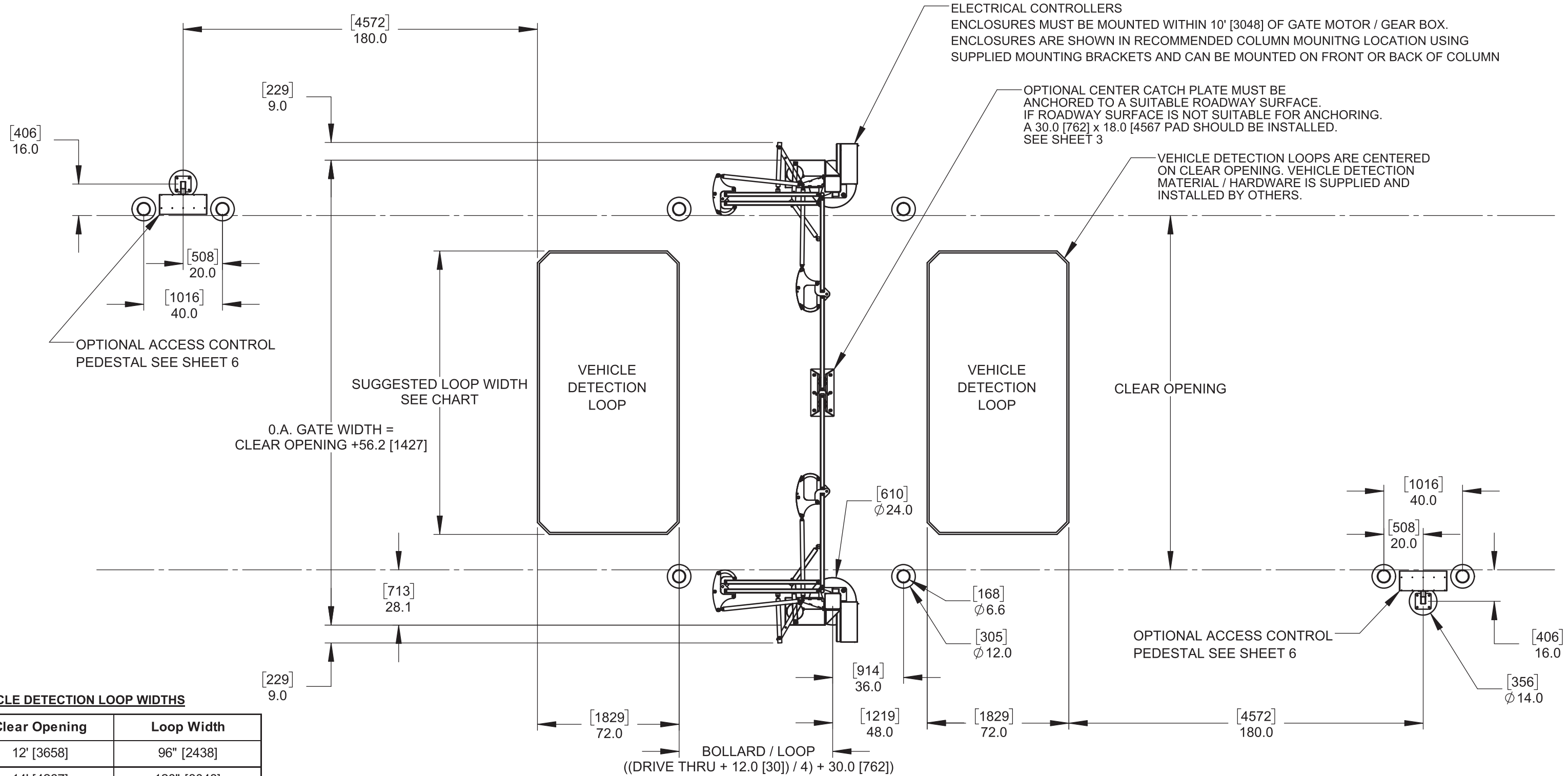


DETAIL P - BARB WIRE ANTI-CLIMB

Description:		
BG-2310 TRACKLESS BI-FOLDING GATE SYSTEM OPTIONS		
Customer / Project Name:		
Finish:	Date:	
	1/30/2019	
Drawing No.	Rev.	Sheet:
	A	4 of 6



6828 W Melrose St.
Boise, ID 83709
Phone: 1-800-275-5998
Email: info@sloansg.com
Web: www.sloansg.com



VEHICLE DETECTION LOOP WIDTHS

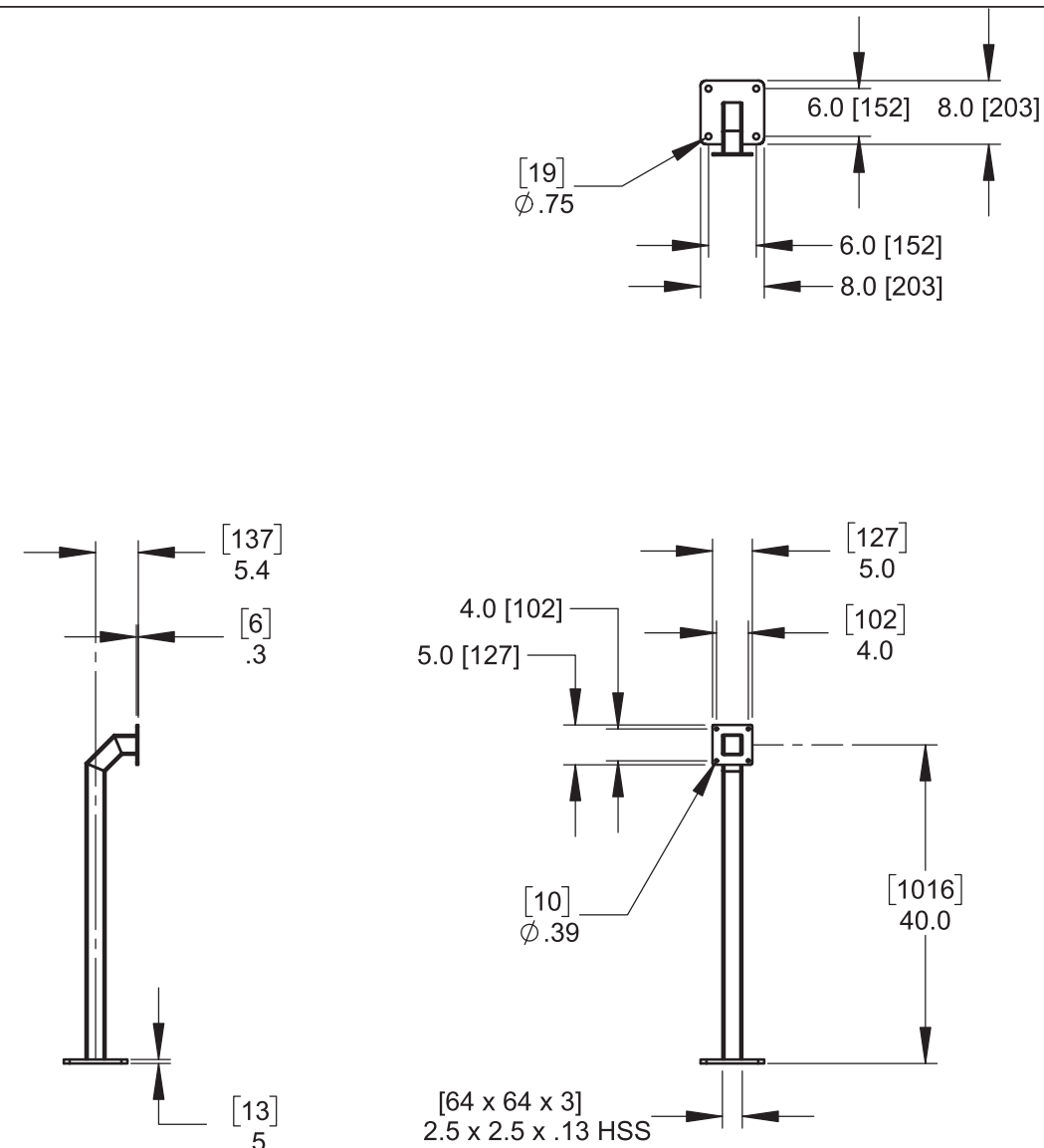
Clear Opening	Loop Width
12' [3658]	96" [2438]
14' [4267]	120" [3048]
16' [4877]	144" [3658]
18' [5486]	168" [4267]
20' [6096]	192" [4877]
22' [6706]	216" [5486]
24' [7315]	240" [6096]
26' [7925]	264" [6706]
28' [8534]	288" [7315]
30' [9144]	312" [7925]

NOTE:
BOLLARDS ARE SHOWN AS A REFERENCE ONLY. ALL FINAL DIMENSIONS
AND MATERIALS ARE SUPPLIED AND INSTALLED BY OTHERS

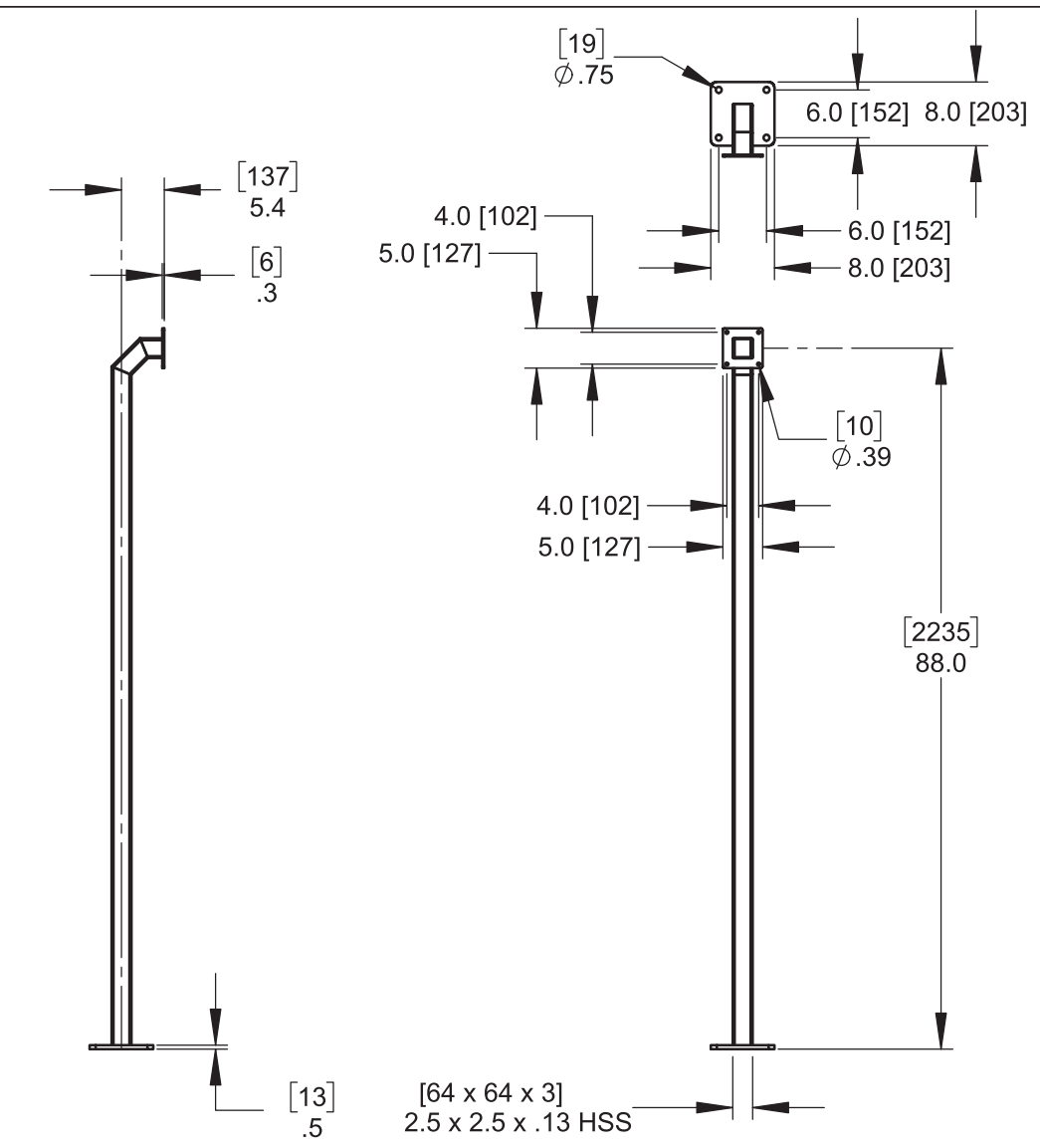
Description: BG-2310 TRACKLESS BI-FOLDING GATE SYSTEM GENERIC SITE LAYOUT		
Customer / Project Name:		
Finish:	Date:	1/30/2019
Drawing No.	Rev. A	Sheet: 5 of 6



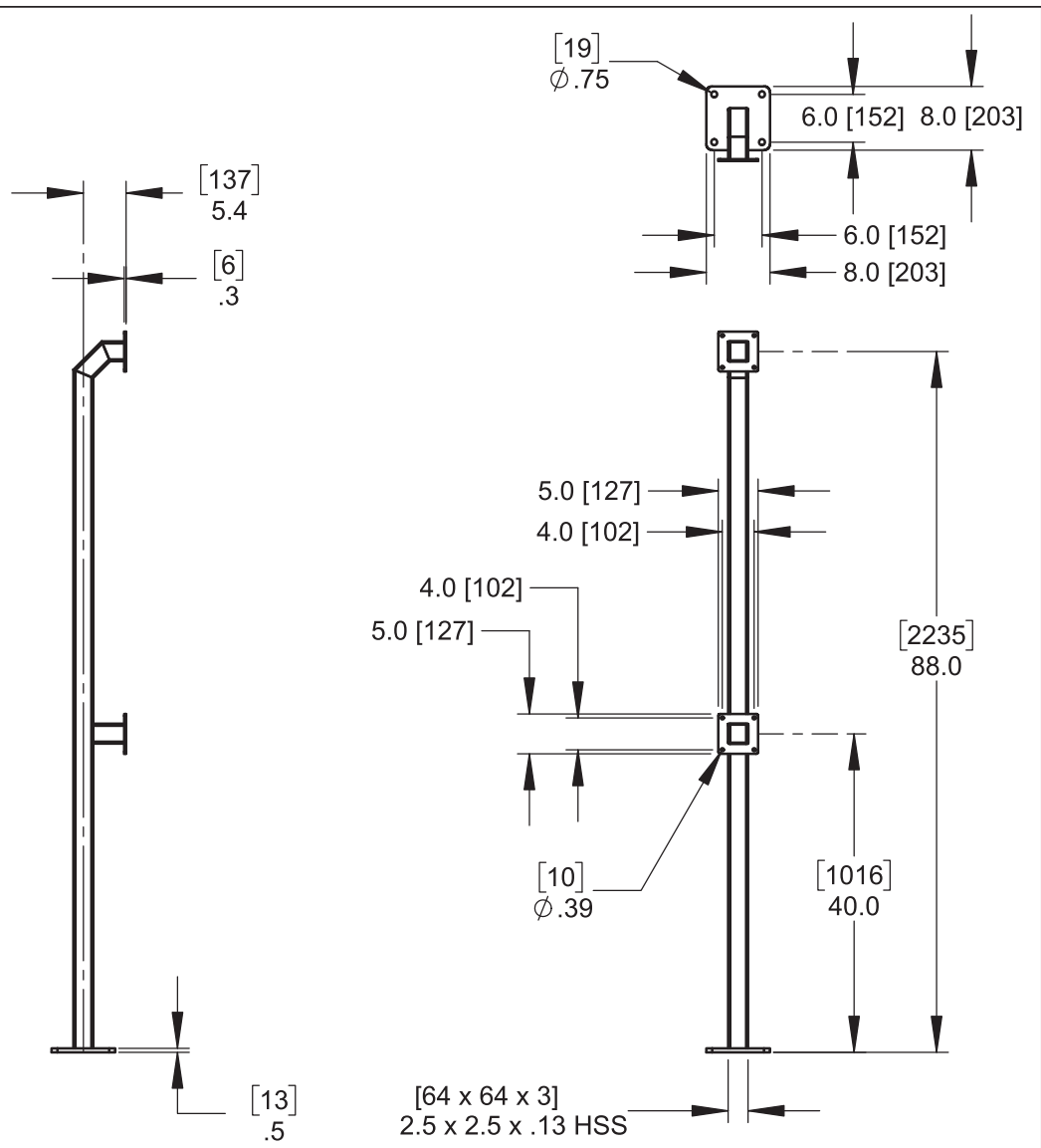
6828 W Melrose St.
Boise, ID 83709
Phone: 1-800-275-5998
Email: info@sloansg.com
Web: www.sloansg.com



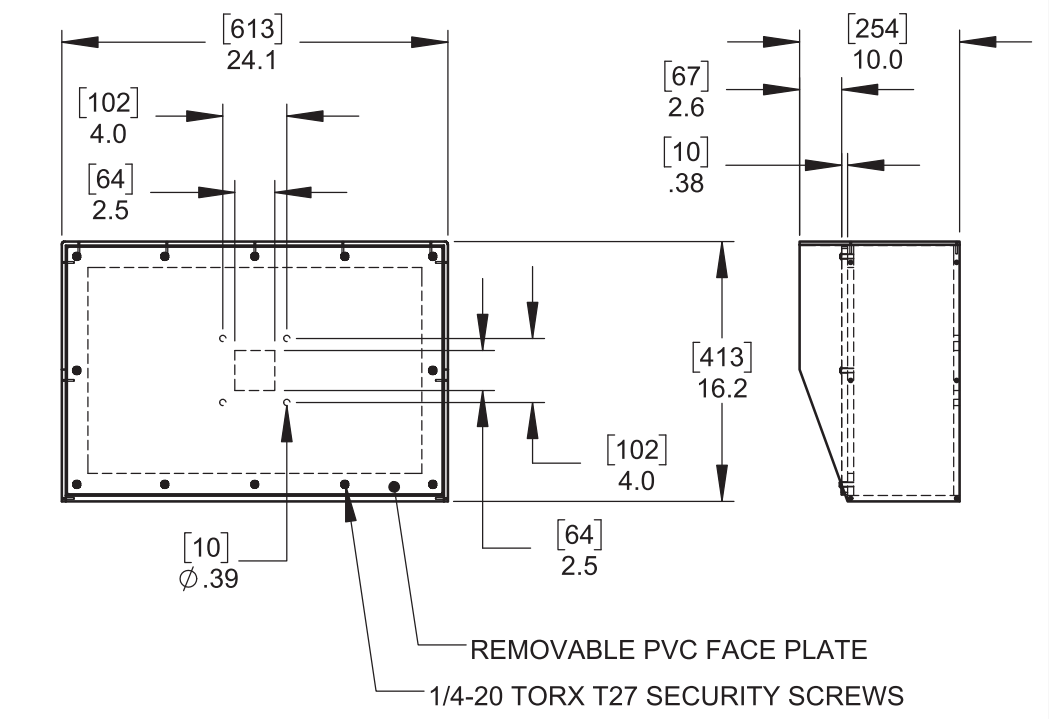
DETAIL Q-1 - SINGLE HEIGHT PEDESTAL STAND 40.0" [1016]



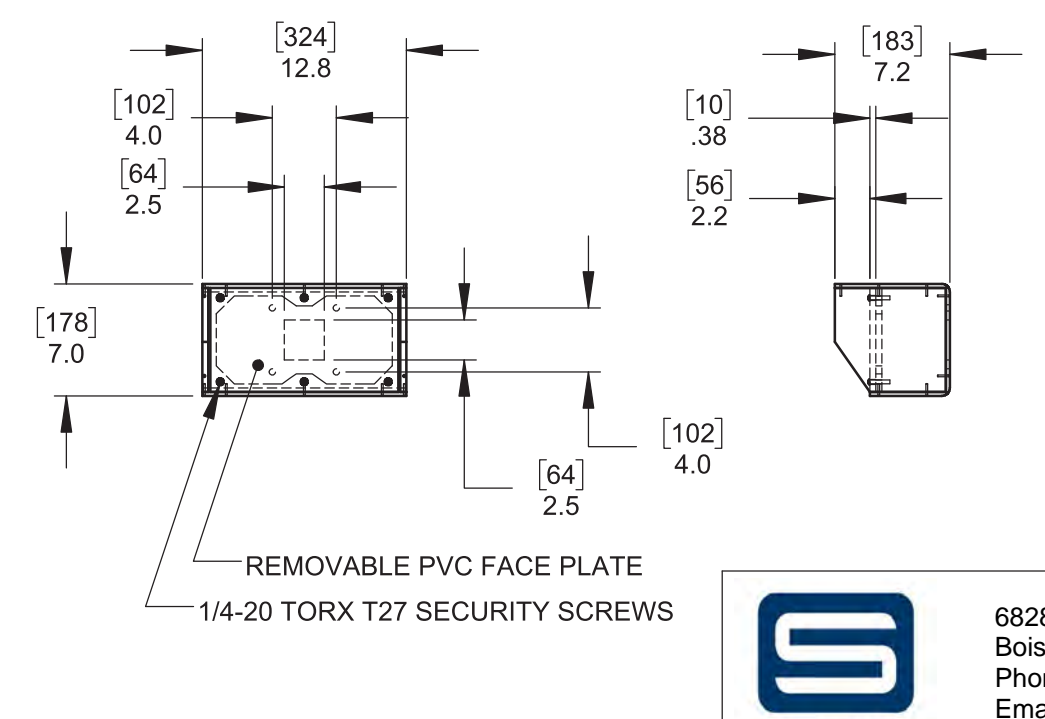
DETAIL Q-2 - SINGLE HEIGHT PEDESTAL STAND 88.0" [2235]



DETAIL Q-3 - DUAL HEIGHT PEDESTAL STAND 40.0" [1016] / 88.0" [2235]



DETAIL R-1 - LARGE POLYCARBONATE PEDESTAL HEAD



DETAIL R-2 - SMALL POLYCARBONATE PEDESTAL HEAD

Description:		
BG-2310 TRACKLESS BI-FOLDING GATE SYSTEM OPTIONAL ACCESS CONTROL PEDESTALS		
Customer / Project Name:		
Finish:	Date:	
		1/30/2019
Drawing No.	Rev.	Sheet:
	A	6 of 6



6828 W Melrose St.
Boise, ID 83709
Phone: 1-800-275-5998
Email: info@sloansg.com
Web: www.sloansg.com